

James Barron Art

Dallas Art Fair
April 21 - 24, 2021

Booth F24

VISIT US BY APPOINTMENT
SOUTH KENT, CT
US +1 917 270 8044

JAMES@JAMESBARRONART.COM

HASCY@JAMESBARRONART.COM

MARIA@JAMESBARRONART.COM

DALLAS ART FAIR

James Barron Art
Booth F24

Our exhibition *How Blue Can You Get?* explores the restorative properties of the color blue as we all move through a difficult moment in time, both globally and individually. We seek refuge in a color that has an entire genre of music named after it—music that wears hardship on its sleeve in order to feel a collective sigh of relief: Blues. Using the epic Blues song “How Blue Can You Get,” as made famous by B.B. King, we are investigating ways in which the color blue has been used: a distant horizon between sea and sky in Sally Michel Avery’s work, a vast expanse that is stitched together by Sidival Fila, and as messengers that conduct energy from this world to beyond in Beverly Pepper’s totemic works. Some artists, such as Cleve Gray, use blue activate an entire painting, even when the predominant color might be orange or red.



HOW BLUE CAN YOU GET?

Martine Bedin
Deborah Brown
Anthony Caro
Sidival Fila
Vera Girivi
Cleve Gray
Sol LeWitt
Sally Michel Avery
Jeannette Montgomery Barron
Dan Miller
Rob Ober
Beverly Pepper
Howardena Pindell
Alexis Rockman
Kikuo Saito
Laura de Santillana
Reza Shafahi
John Sonsini
Elisabetta Zangrandi

CLEVE GRAY

Party, 1978
acrylic on canvas
50 x 60 inches
(127 x 152.4 cm)



BEVERLY PEPPER

Livy, 1981
oil-painted cast iron, steel and stainless steel
85 inches
(215.9 cm)



CLEVE GRAY

Horus, 1979
acrylic on canvas
60 x 60 inches
(152.4 x 152.4 cm)



BEVERLY PEPPER

Ultramarine Blue
oil painted steel
99 inches
(251.5 cm)





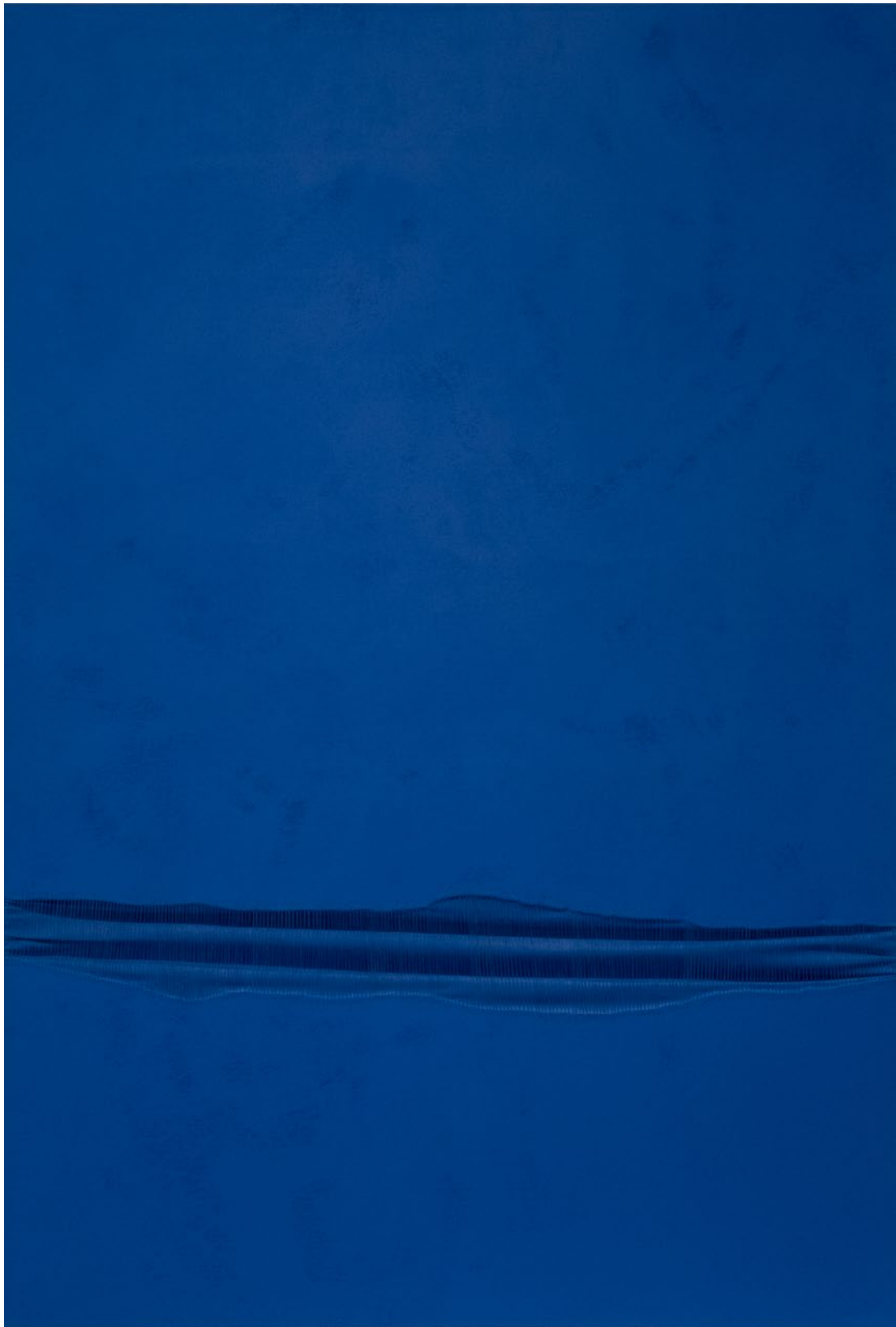
BEVERLY PEPPER

Calm Presence, 1982
painted bronze and rosewood on steel base
102 inches
(259.1 cm)



SIDIVAL FILA

Metafora Blu, 2021
acrylic on sewn canvas
53 x 35 1/3 inches
(135 x 90 cm)



SIDIVAL FILA

Metafora Blu 41, 2021
acrylic on sewn canvas
34 1/5 x 54 3/4 inches
(87 x 139 cm)



MARTINE BEDIN

Cucumber Vase, 1985
glazed ceramic
12 1/2 x 12 x 8 1/2 inches
(31.8 x 30.5 x 21.6 cm)



SOL LEWITT

Squiggly Brushstrokes, 1997
gouache on paper
22 1/2 x 29 3/4 inches
(57.1 x 75.6 cm)



DEBORAH BROWN

Iglesia de Dios, 2022
oil on canvas
60 x 48 inches
(152.4 x 121.9 cm)



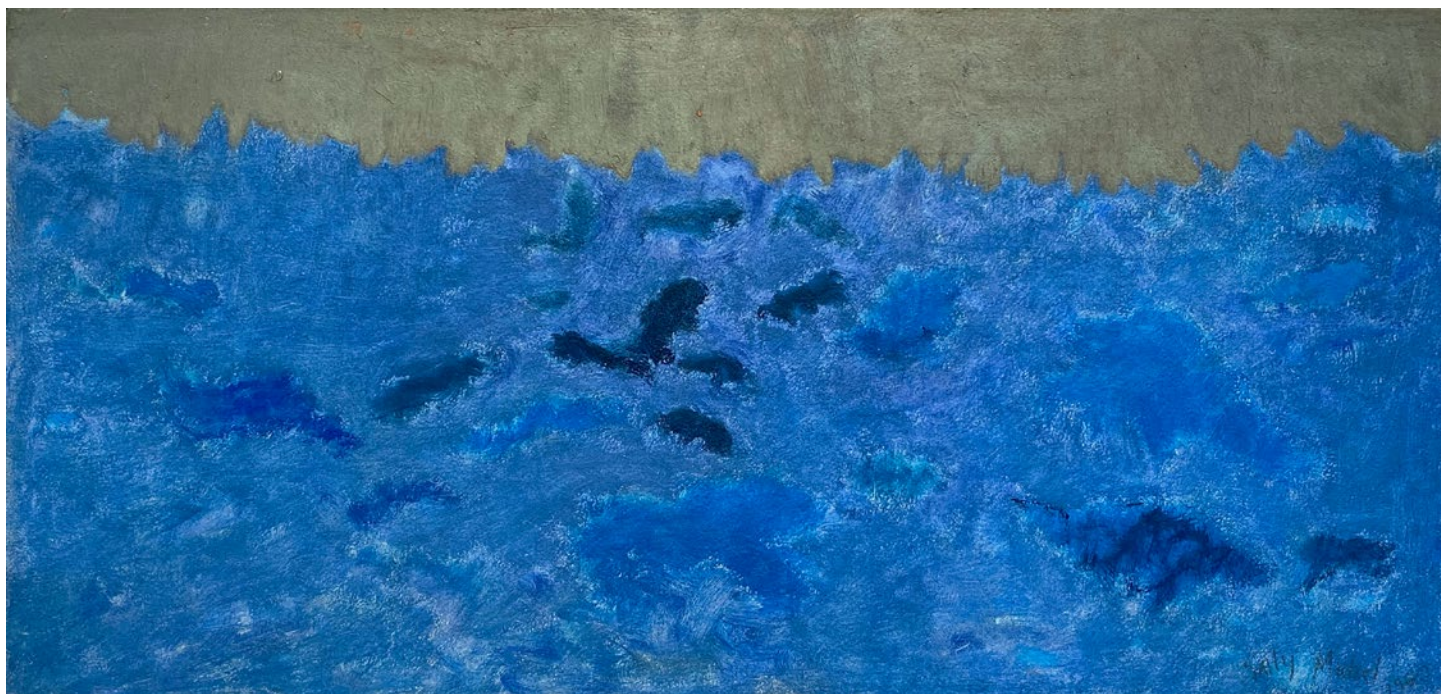


“Blue is introspective and transcendent,
contemplative and aspirational.”

Deborah Brown

SALLY MICHEL AVERY

Blue Seascape, 1960
oil on board
11 5/8 x 23 7/8 inches
(29.5 x 60.6 cm)



SALLY MICHEL AVERY

Untitled (Moonscape), c. 1960
oil on paper
24 x 18 1/4 inches
(61 x 46.4 cm)



ALEXIS ROCKMAN

Alluvial, 2022
oil and cold wax on wood
48 x 40 inches
(121.9 x 101.6 cm)



VERA GIRIVI

Untitled, 2022
acrylic on canvas
23 1/2 x 23 1/2 inches (60 x 60 cm)
VG256





"I live a few meters from the sea, so I live blue and breathe it every day. It gives me a sense of freedom and oxygen. I don't touch it, but it envelops me. I use it in my paintings as a symbol of safety for subjects who appear anxious or anguished."

Vera Girivi

JEANNETTE MONTGOMERY BARRON

Blue Mirror #7, 2022
pigment print
20 x 20 or 40 x 40 inches
Edition of 6 + 3 APs



JOHN SONSINI

Antonio, 2006
oil on canvas
20 x 16 inches
(50.8 x 40.6 cm)



ELISABETTA ZANGRANDI

Paesaggio, 2021
acrylic on wood
17 1/3 x 19 2/3 inches
(44 x 50 cm)
EZI37



“Painting with blue is joyful for me. I feel free from all constraints when I paint seascapes.”

Elisabetta Zangrandi



ROB OBER

Untitled, 2022
acrylic on canvas
30 x 40 inches
(76.2 x 101.6 cm)



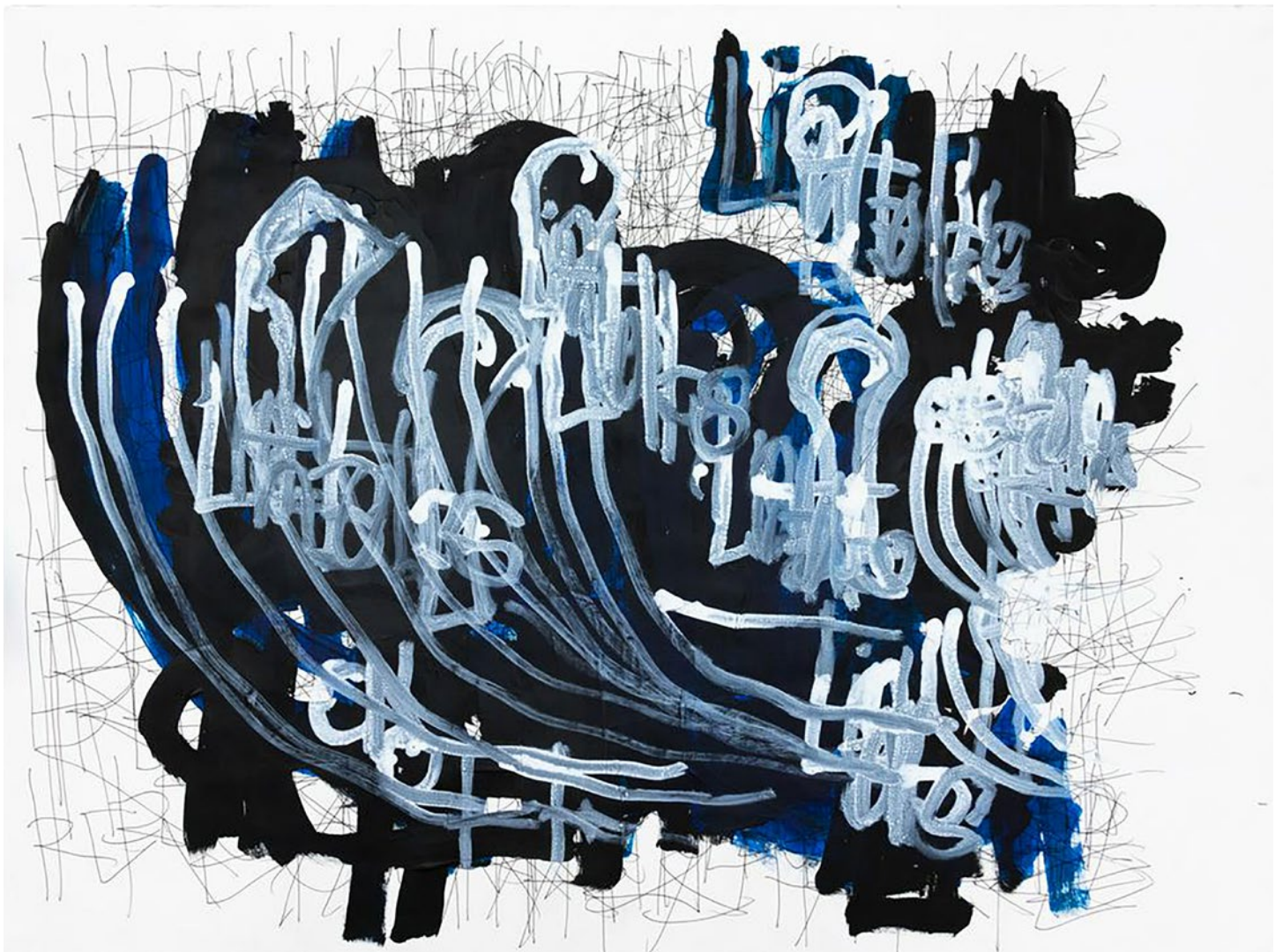
REZA SHAFahi

Untitled, 2021
acrylic on paper
27 1/2 x 19 1/2 inches
(70 x 50 cm)
RS028



DAN MILLER

Untitled, 2020
acrylic and ink on paper
22 x 30 inches
(55.9 x 76.2 cm)



HOWARDENA PINDELL

Untitled #38, 2004 - 2005
etching, punched papers, watercolor, and thread on board
16 x 12 inches
(40.6 x 30.4 cm)





ANTHONY CARO

Table Piece XXXVIII, 1967
steel blued and varnished
10 x 6 x 12 inches
(25.4 x 15.24 x 30.48 cm)





“In the ‘60s you were on the crest of a wave because you were part of the wave.”

Anthony Caro

KIKUO SAITO

Blue Kettle, 1980
oil on canvas
33 x 120 1/4 inches
(83.8 x 305.4 cm)





LAURA DE SANTILLANA

Tokyo-Ga (Sky Blue - Warm Brown), 2018
hand-blown compressed glass
12 1/5 x 8 2/3 x 1 1/2 inches
(31 x 22 x 3.8 cm)



JANET SOBEL + ASHLEY SHAPIRO

In reaction to the humanitarian crisis in Ukraine, James Barron Art is pleased to present an exhibition of Janet Sobel and her granddaughter and Ashley Shapiro. Sobel emigrated to the US in 1908, and her art and her granddaughters' art stand as a testimony to the realization of artistic freedom after political suppression. Janet Sobel made a tremendous mark on the art world in the 1940s. Her drip paintings, which were exhibited at Peggy Guggenheim's Art of This Century gallery in 1946, were seen by Jackson Pollock and Clement Greenberg, and perhaps played a role in the formation of the Jackson Pollock drip. America in the 1940s was a melting pot of immigrants from all over the world, and the duration of that creative spirit is seen today in this body of work by Janet Sobel and Ashley Shapiro, who notes that "Gramma and I connected spiritually and I feel that I've carried her essence into my own life and art." Shapiro's work is deeply spiritual, and conveys messages of healing and hope, which resonate more than ever as the crisis in Ukraine unfolds.



JANET SOBEL

Untitled, c. 1943-48

crayon on paper

12 x 9 inches (30.5 x 22.9 cm)

JSOB100



JANET SOBEL

Untitled, c. 1941-46
gouache on paper
14 x 9 inches (35.6 x 22.9 cm)
JSOB095



JANET SOBEL

Untitled, c. 1943-48
gouache on paper
6 7/8 x 4 inches (17.5 x 10.2 cm)
JSOB096



“Without any instilled deference to rules that mustn’t be broken – and with the fearlessness of someone who had survived the traumas of religious persecution and the hardships of the Great Depression – Sobel unselfconsciously set about inventing art as if entirely from scratch.”

Kelly Grovier



JANET SOBEL

Untitled, c. 1943-48
gouache on paper
11 3/8 x 7 5/8 inches (28.9 x 19.4 cm)
JSOB101



ASHLEY SHAPIRO

Untitled, 2021

ink and oil pastel on paper
12 1/4 x 9 inches (31.1 x 22.9 cm)

ASHA044



“I come from a long line of strong, spiritual and highly mystic women... There is a mystical thread that goes from my earliest childhood memories until this very moment. The ability to heal, to ease the suffering of so many others, has been a theme for all of us.”

Ashley Shapiro



Additional works

Charles Alston
Romare Bearden Deborah
Brown
Willem de Kooning
Richard Diebenkorn
Sidival Fila
Lucian Freud
Vanessa German
Pam Glick
Alison Hall
Richard Hunt
Sol LeWitt
Ed McGowin
Jeanne Moutoussamy-Ashe
Beverly Pepper
Milton Resnick
Jackie Saccoccio
Kikuo Saito
Reza Shafahi
Yvonne Thomas
Bob Thompson

RICHARD DIEBENKORN

Reclining Nude on Flowered Sofa, 1967

gouache on paper

14 x 17 inches

(35.6 x 43.2 cm)



YVONNE THOMAS

Bright Day, 1966
oil on canvas
72 x 63 inches
(182.9 x 160 cm)



URSULA VON RYDINGSVARD

Scattered Sprawl, 2010

cedar

65 x 94 x 6 inches

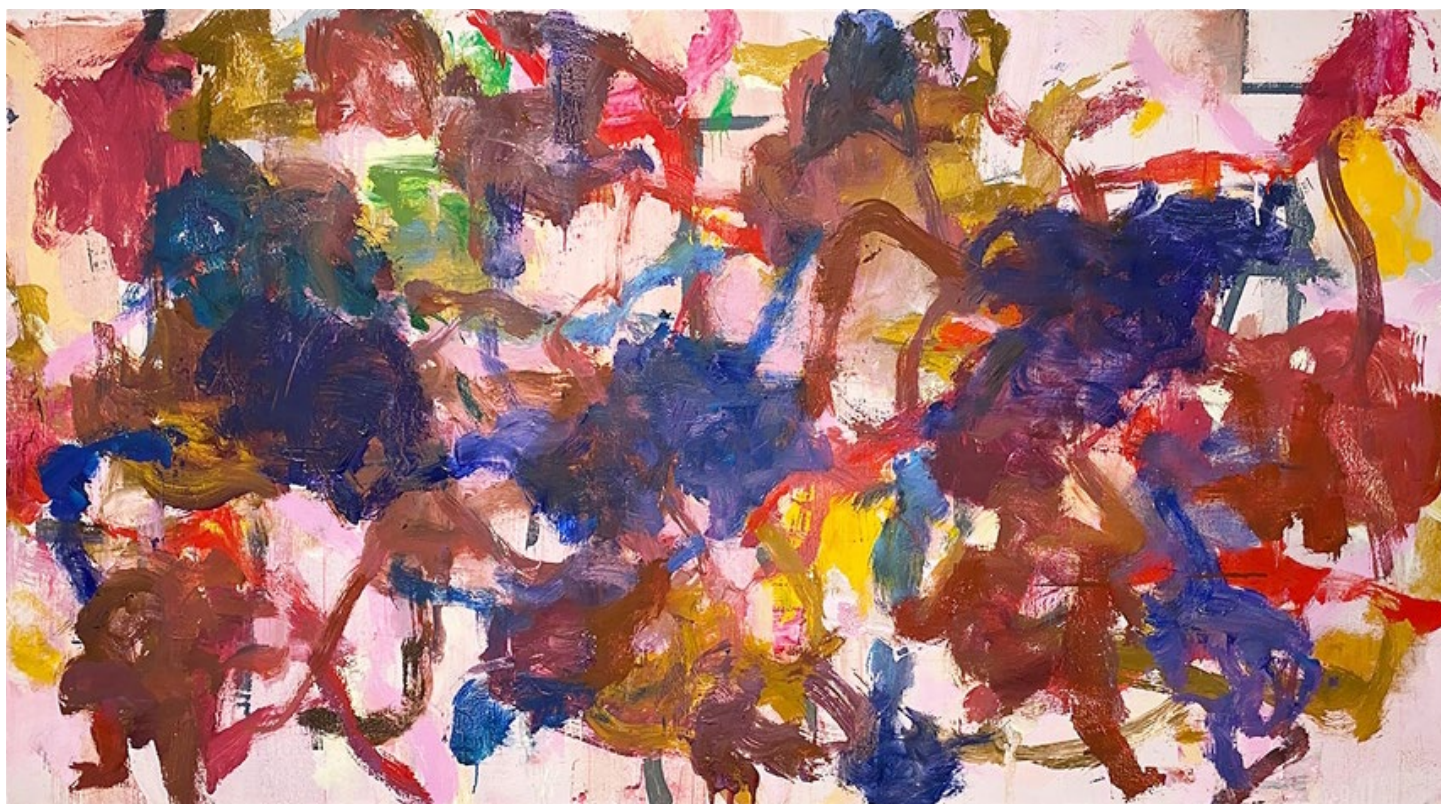
(165.1 x 238.8 x 15.2 cm)





KIKUO SAITO

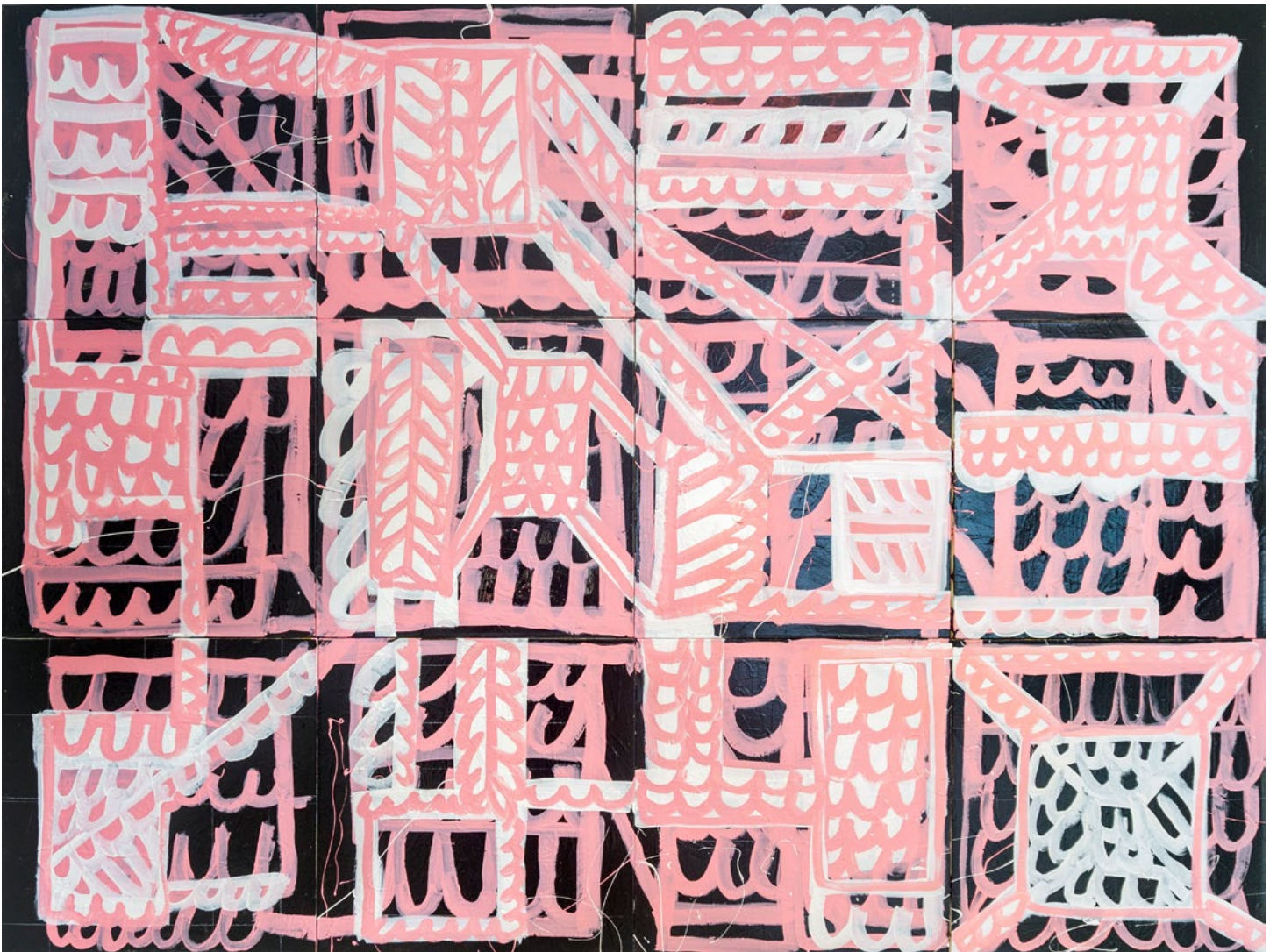
Copper Moon, 2010
acrylic on canvas
29 x 54 inches (73.7 x 137.2 cm)



PAM GLICK

Pink Gerty-Niagara-USA-Canada, 2021
water-based enamel, acrylic, and graphite on canvas
60 x 80 inches (152.4 x 203.2 cm)

composed of 12 panels, 20 x 20 inches each





WILLEM DE KOONING

Untitled, c. 1960
Sumi ink and graphite on paper
11 x 8 1/2 inches
(27.9 x 21.5 cm)



LUCIAN FREUD

Head of a Man, 1992
etching on Rives BFK 250 gsm paper, with full margins
Image: 8 5/8 x 8 inches
Sheet: 16 1/2 x 15 3/4 inches
Edition 20 of 20



20
—
20

L.F.

JACKIE SACCOCCIO

Portrait (E.M. of B.M.), 2015
oil and mica on linen
106 x 79 inches
(269.2 x 200.7 cm)



VANESSA GERMAN

*KIKI.WORKS LATE NIGHT SHIFT.BEATS FACE.X=SIGHT OF SOUL.
SHE WILL CROSS YOU.CANNOT TOUCH.HER SOUL IZ.UNAVAILABLE
FOR THE TRAMPLING, 2019*

mixed-media assemblage

47 x 25 1/2 x 7 inches

(119.4 x 64.8 x 17.8 cm)



RUTH DUCKWORTH

MaMa Pot, circa 1980

stoneware

11 x 12 1/2 x 11 1/2 inches

(27.9 x 31.8 x 29.2 cm)



DEBORAH BROWN

Yellow Door, 2021
oil on canvas
48 x 48 inches
(121.9 x 121.9 cm)



DEBORAH BROWN

Loading Dock, 2021
oil on canvas
77 x 88 inches
(195.6 x 223.5 cm)



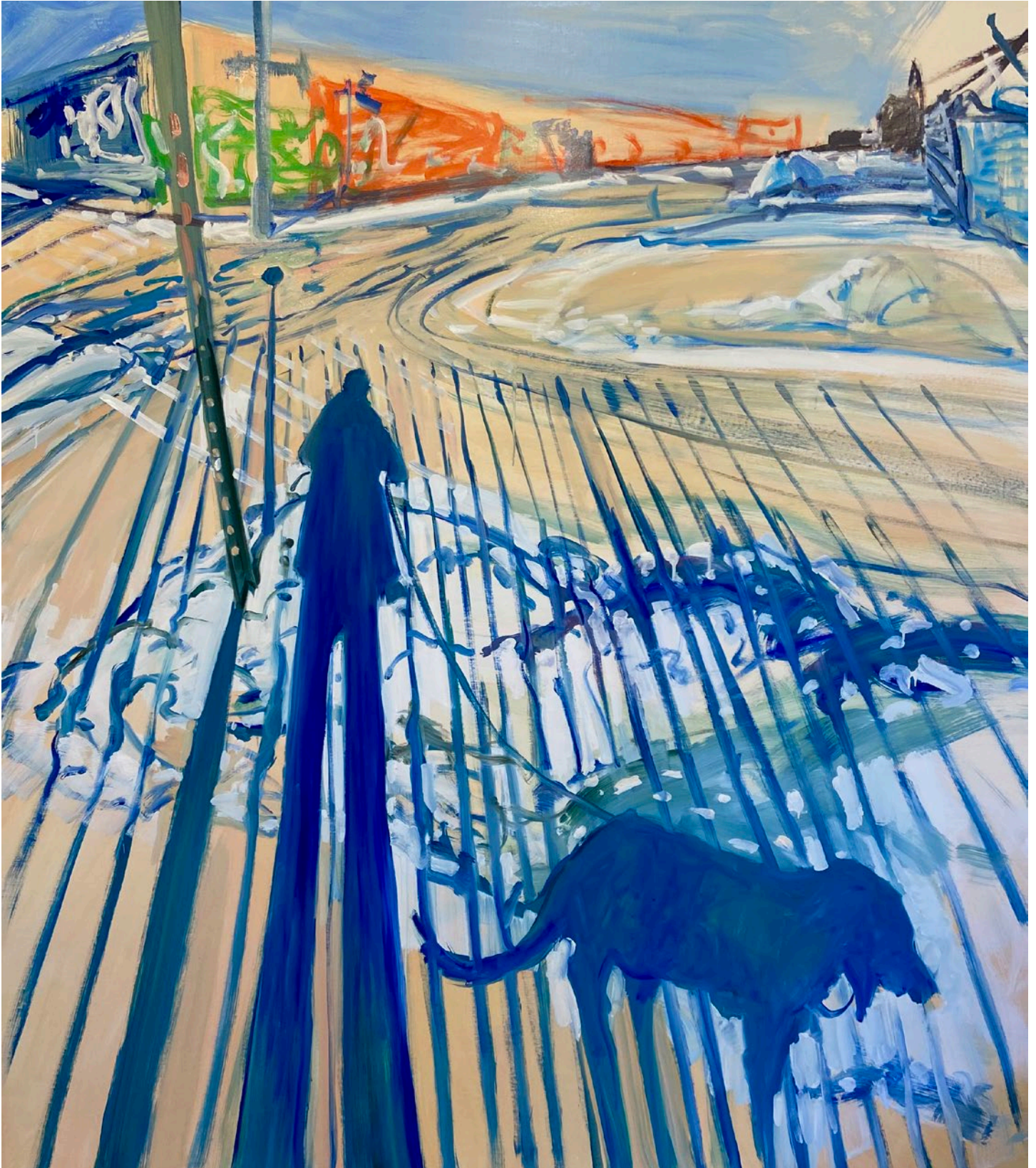
DEBORAH BROWN

Cement Truck Tracks, 2021

oil on canvas

88 x 77 inches

(223.5 x 195.6 cm)



DEBORAH BROWN

Daffodils, 2022
oil on canvas
60 x 48 inches
(152.4 x 121.9 cm)



SIDIVAL FILA

Metafora Giallo 95, 2021
acrylic on sewn canvas
48 1/2 x 42 inches
(123 x 107 cm)

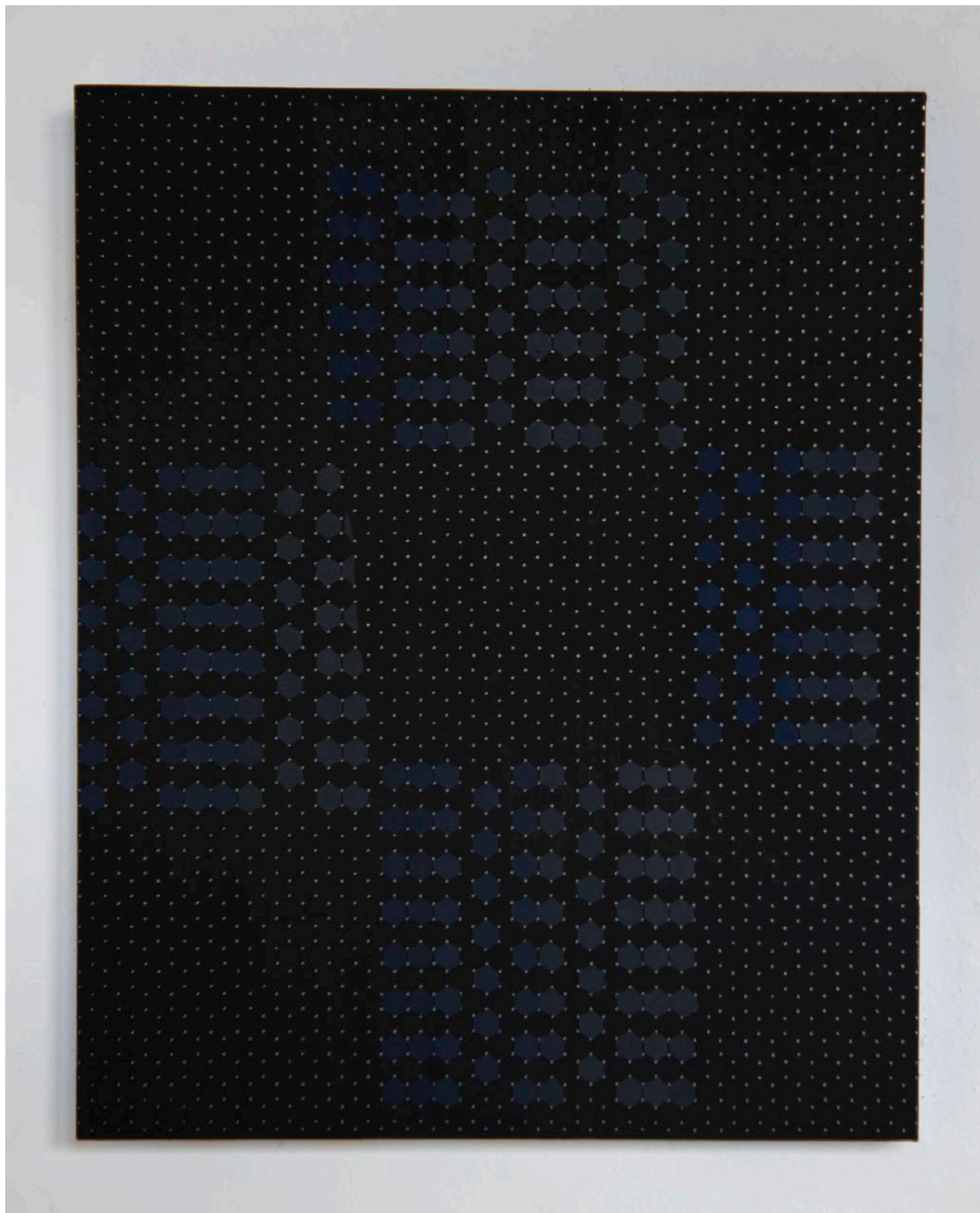


Metafora Bianco 18, 2021
acrylic on sewn canvas
33 4/5 x 28 4/5 inches
(86 x 73.5 cm)



ALISON HALL

You Never Even Called Me By My Name (Anni, the bluebird), 2021
oil, graphite and plaster on panel, artist's frame, Virginian black walnut
13 x 11 inches
(33 x 27.9 cm)



ALISON HALL

*You Never Even Called Me By My Name (Al,
cold eyed and a mean), 2021*

oil, graphite and plaster on panel, artist's
frame, Virginian black walnut

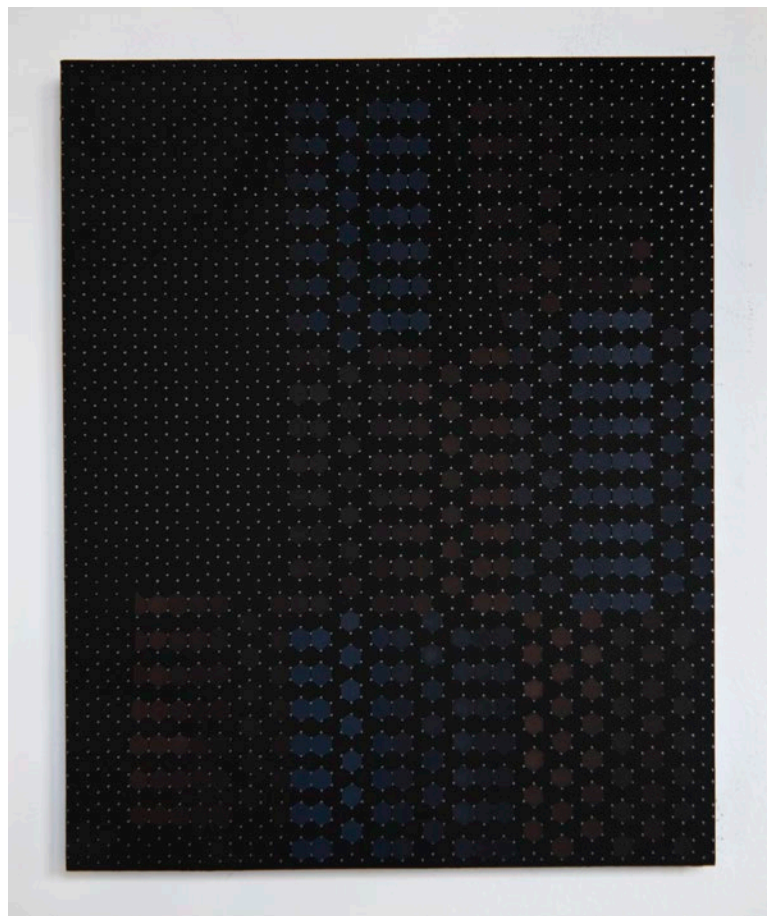
13 x 11 inches
(33 x 27.9 cm)



*You Never Even Called Me By My Name (Paul,
eyes to see you with), 2021*

oil, graphite and plaster on panel, artist's
frame, Virginian black walnut

13 x 11 inches
(33 x 27.9 cm)



ROB OBER

Untitled, 2022
acrylic on canvas
48 x 60 inches
(121.9 x 152.4 cm)



ROB OBER

Untitled, 2022
acrylic on canvas
60 x 48 inches
(152.4 x 121.9 cm)



MILTON RESNICK

Straws in the Wind II, 1981
oil on canvas
103 1/2 x 110 inches
(262.9 x 279.4 cm)



BEVERLY PEPPER

Senza Titolo, 1963

bronze

24 1/2 x 11 x 14 inches

(62 x 28 x 35.5 cm)



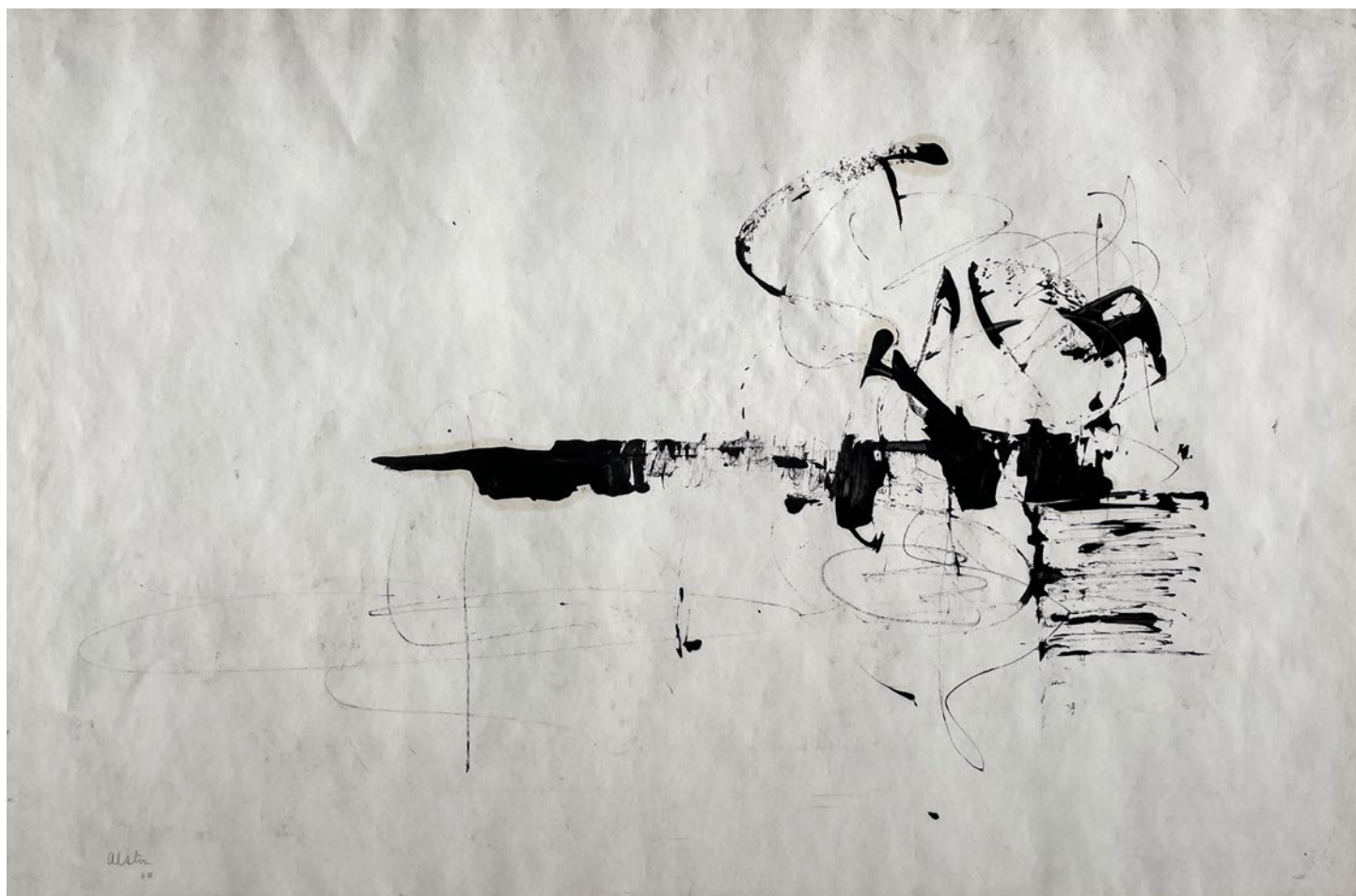
ROMARE BEARDEN

Untitled (Collage), 1958
color paper collage on board
5 x 20 inches
(12.7 x 50.8 cm)



CHARLES ALSTON

Untitled, 1960
oil on paper
12 x 18 inches
(30.4 x 45.7 cm)





JEANNE MOUTOUSSAMY-ASHE

Black Man, White Woman, 1977

silver gelatin print

24 x 20 inches

(61 x 50.8 cm)

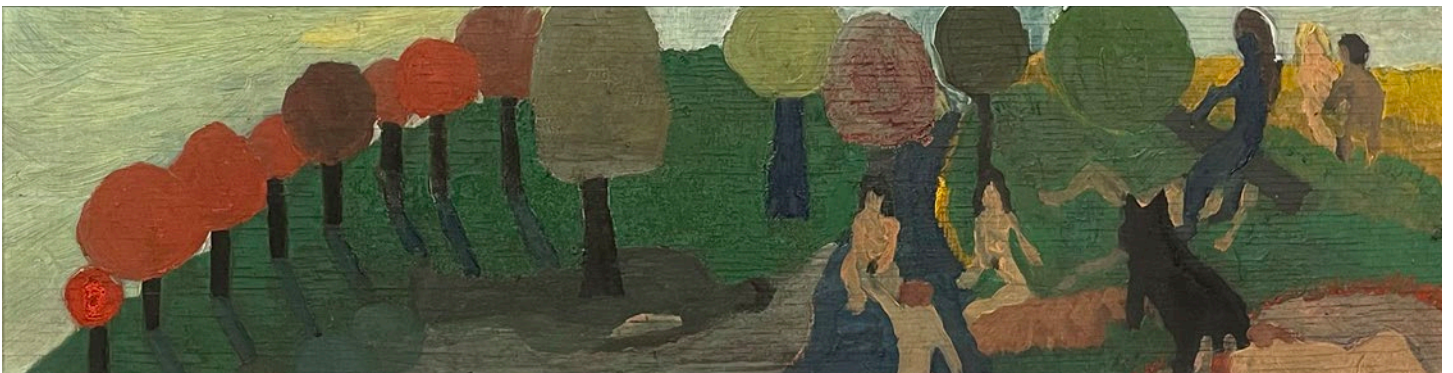
Edition 4 of 10



BOB THOMPSON



Landscape (Abstraction), 1959
oil on wood panel
7 x 19 inches
(17.8 x 48.3 cm)



Untitled (figures in a landscape), 1960
oil on plywood
6 x 22 inches
(15.2 x 55.9 cm)

JEANNETTE MONTGOMERY BARRON

Cindy Sherman, NYC, 1984

digital print

Image size: 39 1/2 x 39 1/2 inches

Paper size: 43 x 43 inches

Framed size: 45 x 45 inches



REZA SHAFahi

Untitled, 2021
acrylic on paper
27 1/2 x 19 1/2 inches
(50 x 70 cm)
RS030



REZA SHAFahi

Untitled, 2021
acrylic on paper
27 1/2 x 19 1/2 inches
(70 x 50 cm)
RS027



RICHARD HUNT

Untitled, 1999

bronze

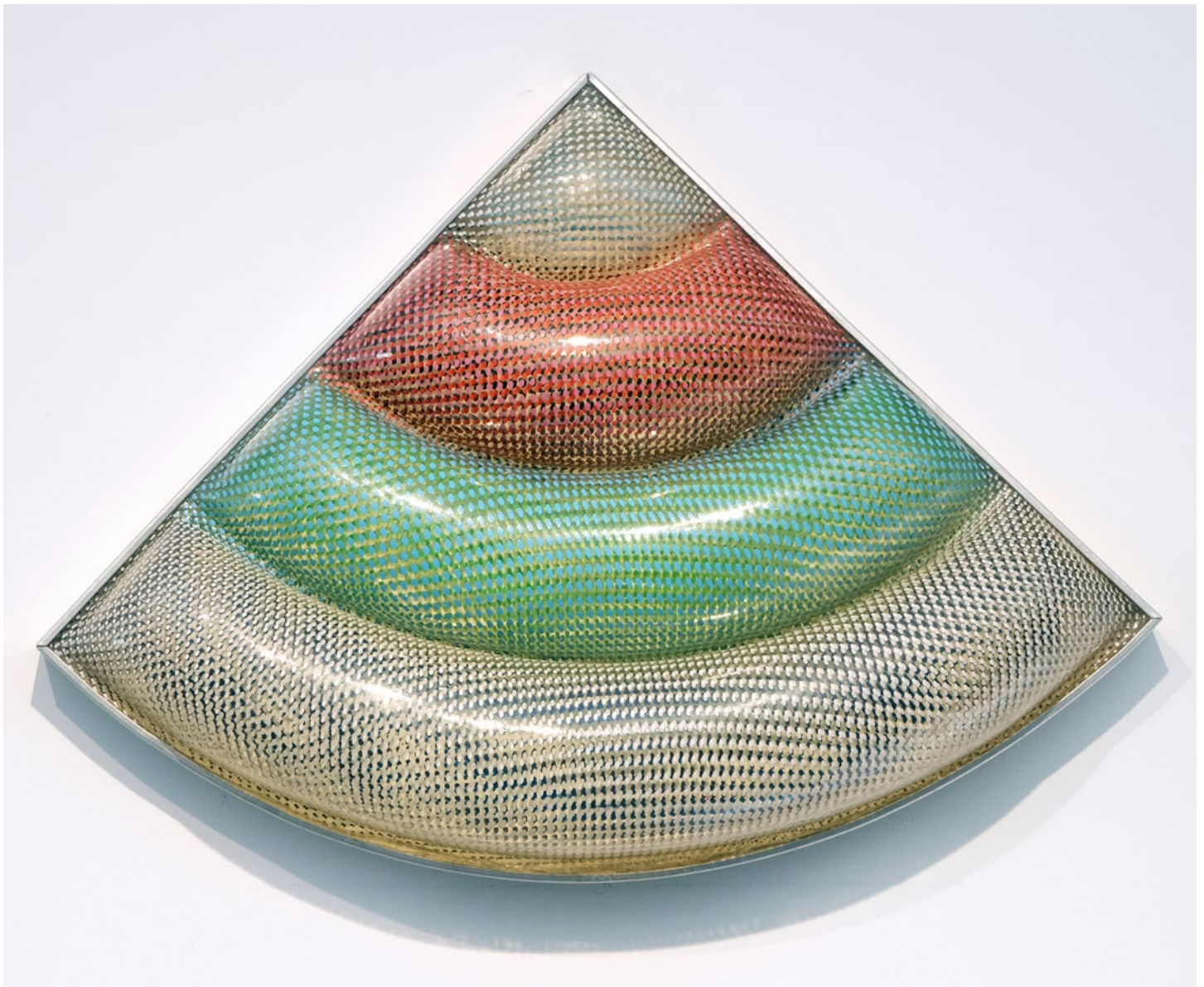
10 1/2 x 2 1/2 x 2 1/2 inches

(26.6 x 6.3 x 6.3 cm)



ED MCGOWIN (FOR ALVA FOST)

White, Green, Red, Blue, circa 1967
vacuum formed painted Uvex
11 x 12 1/2 x 11 1/2 inches
(27.9 x 31.8 x 29.2 cm)



James Barron Art

Dallas Art Fair
April 21 - 24, 2021

Booth F24

VISIT US BY APPOINTMENT
SOUTH KENT, CT
US +1 917 270 8044

JAMES@JAMESBARRONART.COM

HASCY@JAMESBARRONART.COM

MARIA@JAMESBARRONART.COM