

James Barron Art

Outsider Art Fair
January 28 - February 7, 2021

James Barron Art

Outsider Art Fair NYC

January 28 - February 7, 2021

Online + South Kent, CT by appointment

Vera Girivi
Sidival Fila
Elisabetta Maestro
Reza Shafahi
Janet Sobel
Elisabetta Zangrandi



Vera Girivi

VERA GIRIVI

Untitled, 2020
acrylic on canvas
47 x 39 inches (119 x 99 cm)
VG161



VERA GIRIVI

Untitled, 2020
acrylic on canvas
35 1/2 x 35 1/2 inches (90 x 90 cm)
VG167





"I understood that physical contact is necessary after a period of seclusion, during which you lose orientation, the pleasure of colors, the sound of voices, social life."

Vera Girivi

VERA GIRIVI

Untitled, 2020
acrylic on canvas
39 1/2 x 35 1/2 inches (100 x 90 cm)
VG170



VERA GIRIVI

Untitled, 2020
acrylic on canvas
35 1/2 x 35 1/2 inches (90 x 90 cm)
VGI69



VERA GIRIVI

Untitled, 2020
acrylic on canvas
35 1/2 x 35 1/2 inches (90 x 90 cm)
VG168







Sidival Fila

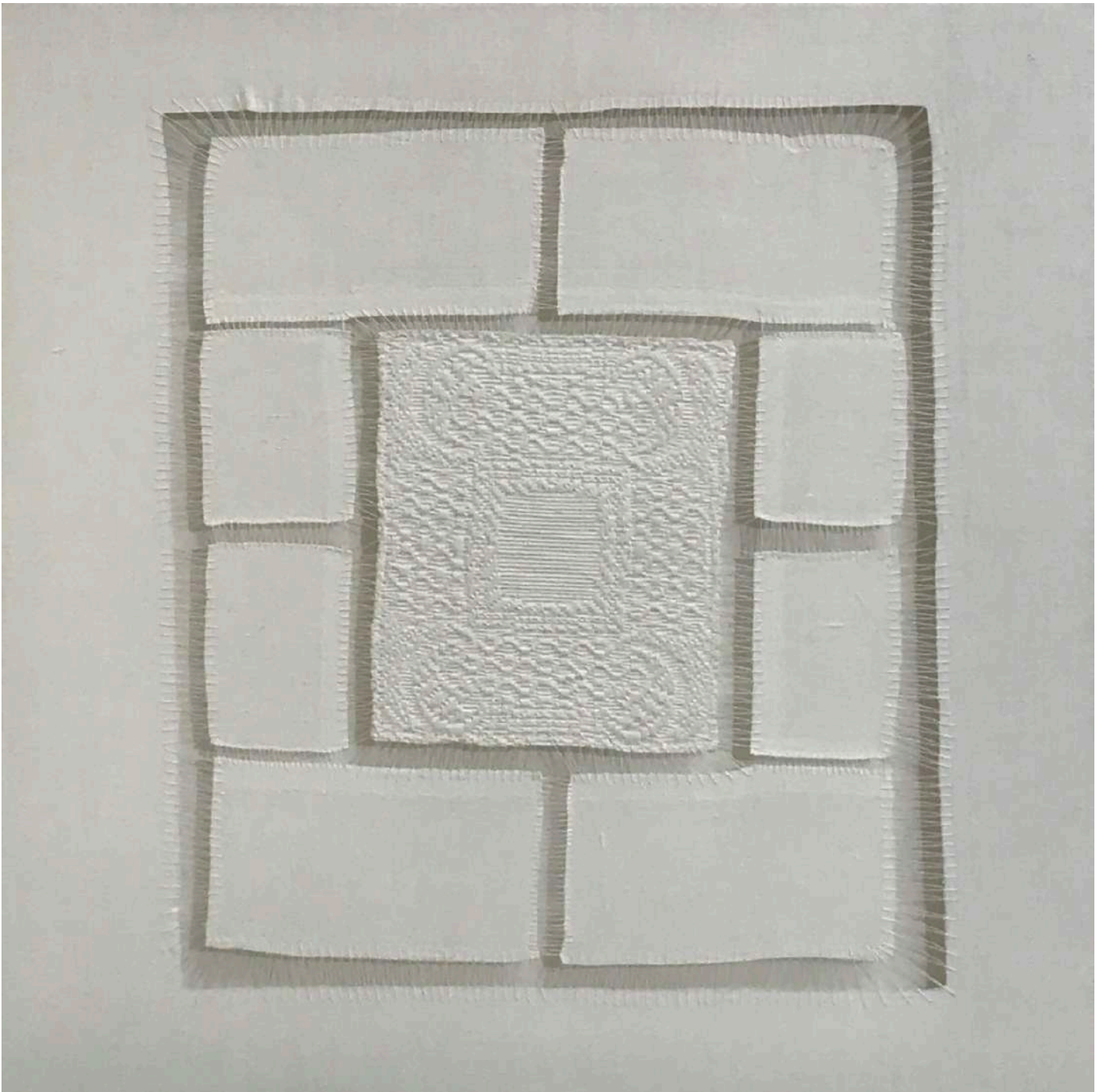
SIDIVAL FILA

Metafora Blu Cobalto 161, 2020
dry pigment on sewn canvas
17 3/4 x 13 3/4 inches (45 x 35 cm)



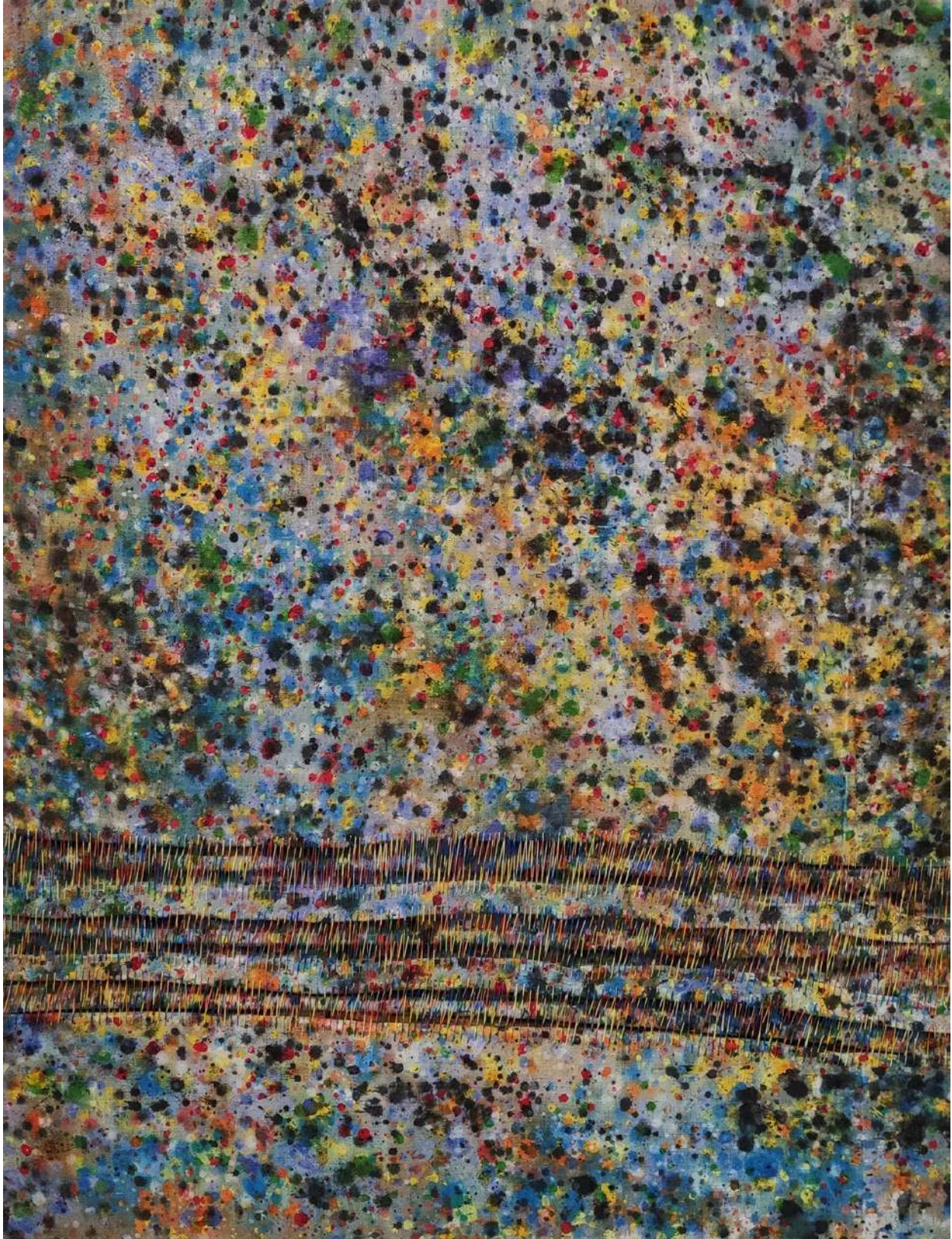
SIDIVAL FILA

St 211, 2019
cut and hand-sewn antique fabric
23 5/8 x 23 5/8 inches (60 x 60 cm)



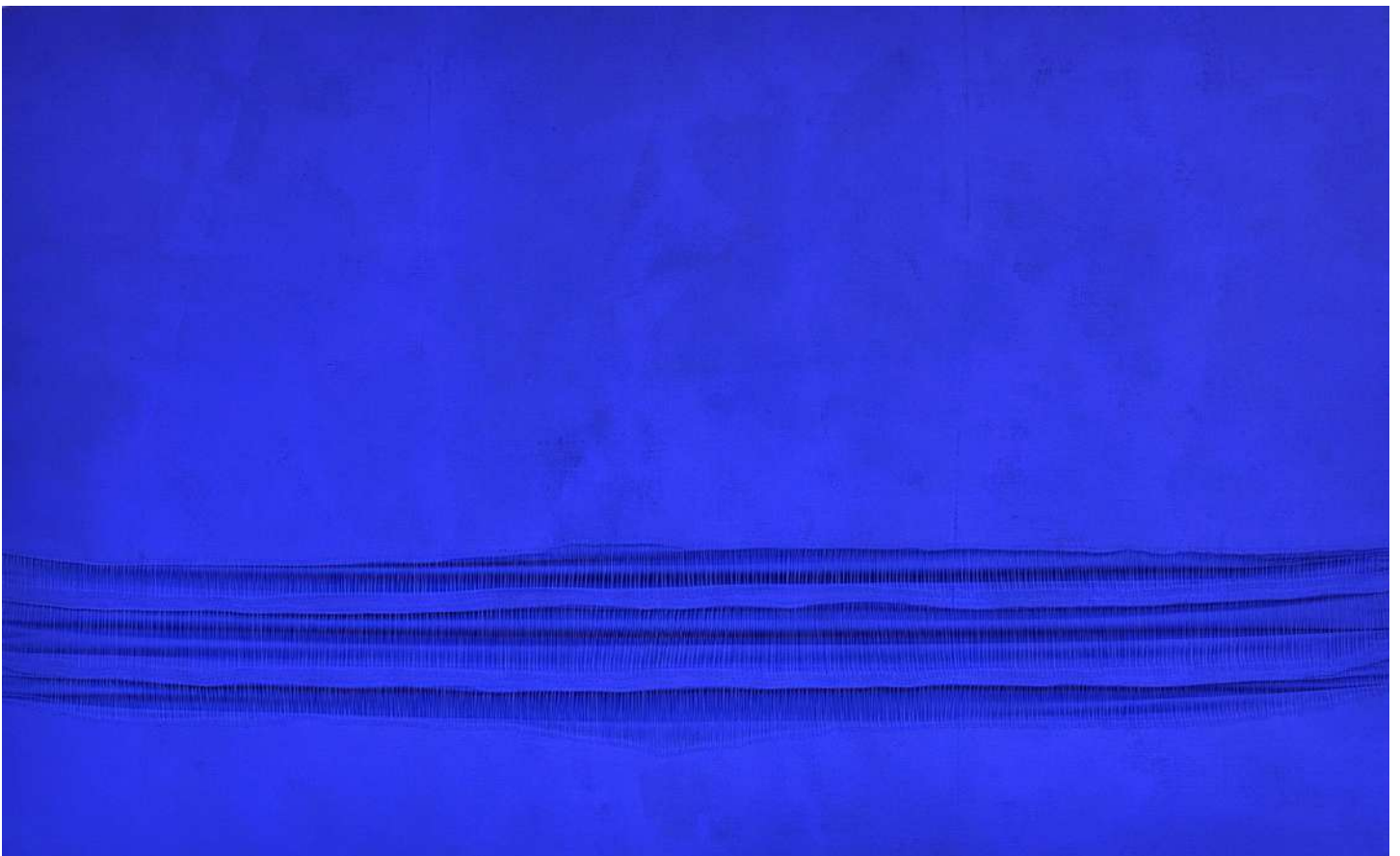
SIDIVAL FILA

Coloured Marble 11, 2020
mixed media, color canvas sewn with color threads
43 1/4 x 33 1/2 inches (110 x 85 cm)



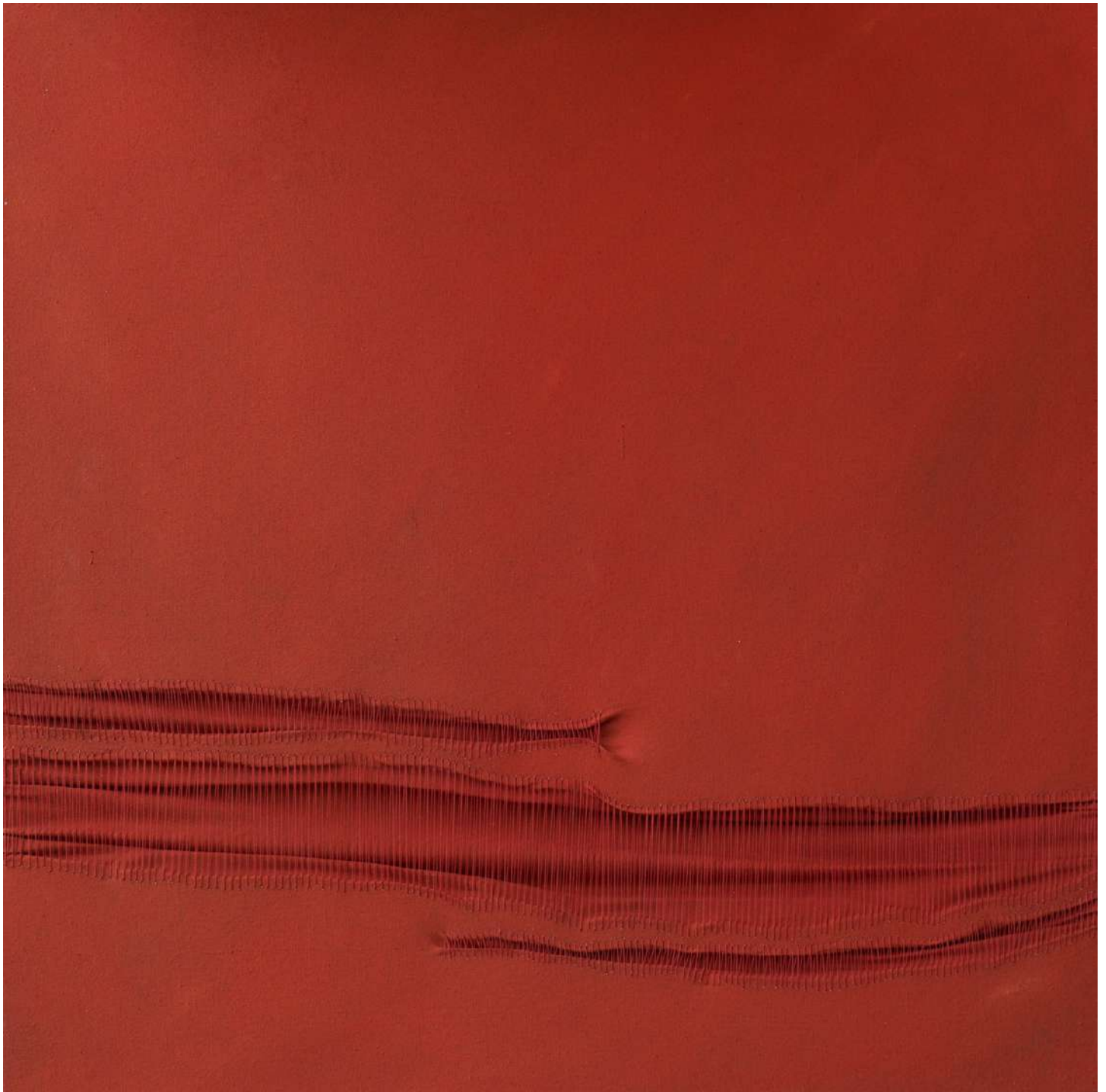
SIDIVAL FILA

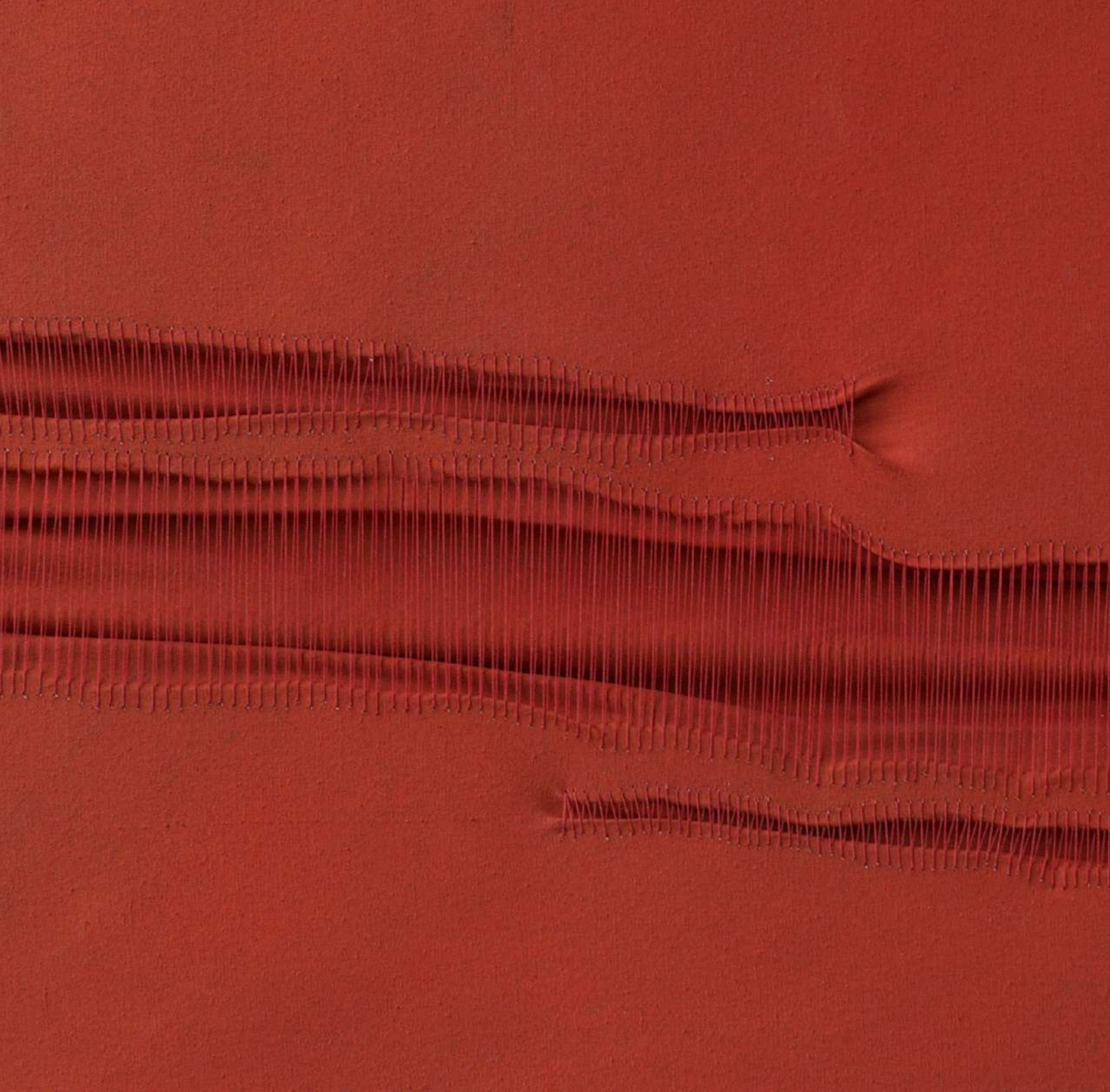
Metafora Blu Cobalto 98, 2020
acrylic on sewn canvas
63 x 38 3/8 inches (160 x 100 cm)



SIDIVAL FILA

Metaphor Rosso Carminio 10, 2018
acrylic on stitched canvas, on frame
23 5/8 x 23 5/8 inches (60 x 60 cm)





“We usually perceive color only as a matter on the surface, but in my paintings the presence of the thread with same color of the surface, and the consequent overlapping between wire and surface, amplify the viewer’s perception.”

Sidival Fila

SIDIVAL FILA

Metafora Nero Grafite 15, 2018
dry pigment on stitched canvas
19 5/8 x 23 5/8 inches (50 x 60 cm)



SIDIVAL FILA

Metafora Nero Grafite 5, 2018
dry pigment on stitched canvas
19 5/8 x 11 3/4 inches (50 x 30 cm)



SIDIVAL FILA

Senza Titolo 14 Lino Grigio Scuro, 2019
dry pigment on stitched canvas
27 x 25 inches (69 x 64 cm)







Reza Shafahi

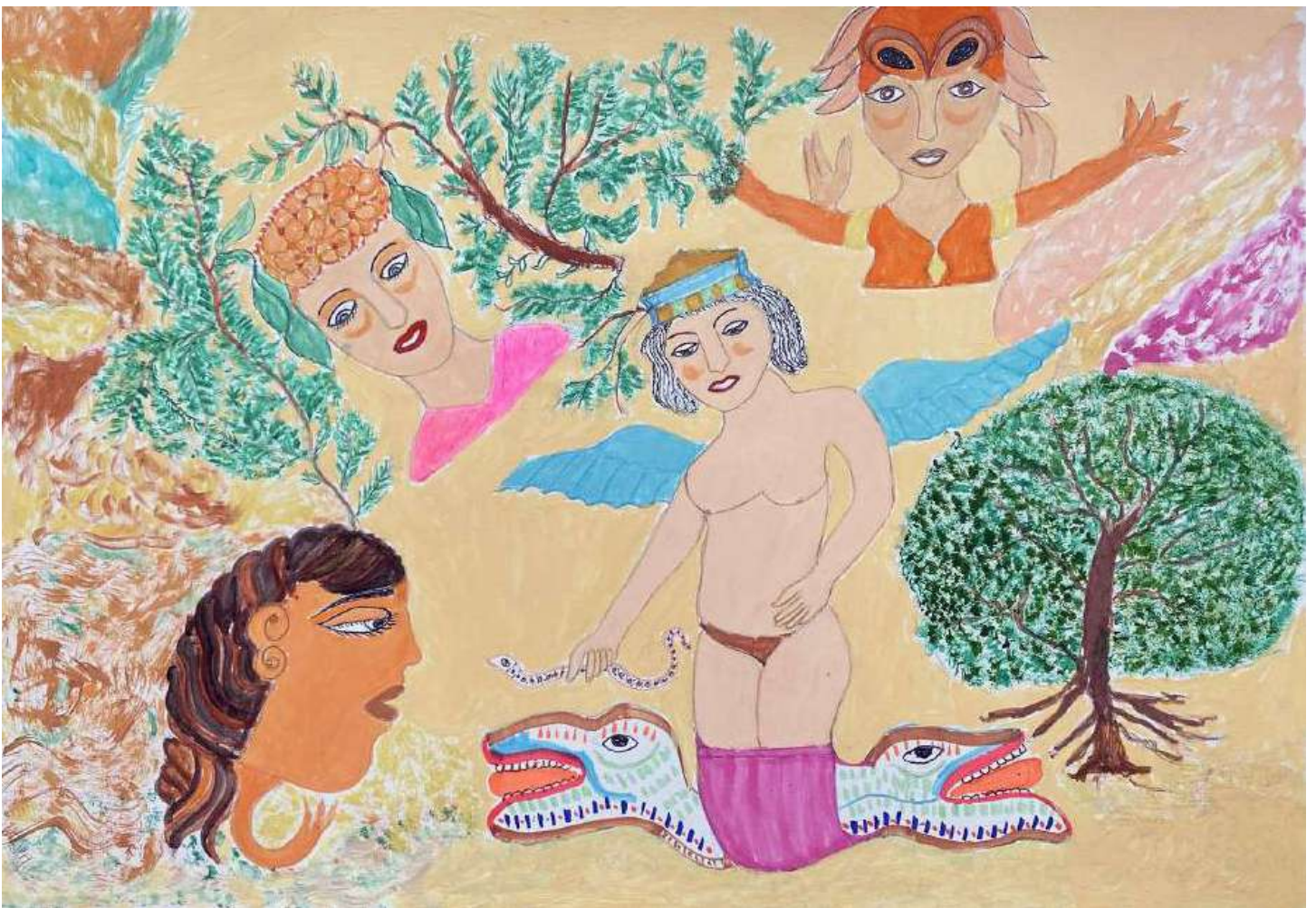
REZA SHAFahi

Untitled, 2020
acrylic on paper
27 1/2 x 19 1/2 inches (70 x 50 cm)



REZA SHAFahi

Untitled, 2020
acrylic on paper
19 1/2 x 27 1/2 inches (50 x 70 cm)



REZA SHAFahi

Untitled, 2020
acrylic on paper
27 1/2 x 19 1/2 inches (70 x 50 cm)





“Reza Shafahi took up his son’s challenge to start drawing after his retirement [from professional boxing]. He has not only enjoyed his activity, but excelled as an artist.”

Ashkan Sepahvand, Magazine Palais #29, Palais de Tokyo

REZA SHAFahi

Untitled, 2020
acrylic on paper
27 1/2 x 19 1/2 inches (70 x 50 cm)



REZA SHAFahi

Untitled, 2020
acrylic on paper
19 1/2 x 27 1/2 inches (70 x 50 cm)







Janet Sobel

JANET SOBEL

Untitled, c. 1943-48
gouache on board
10 1/2 x 6 3/4 inches (26.7 x 17.1 cm)



JANET SOBEL

Untitled, c. 1943-48
gouache on board
11 1/2 x 9 inches (29.2 x 22.9 cm)





“Ukrainian-American self-taught painter Janet Sobel... had a surprising career that progressed from slyly ebullient peasant motifs to small, energetic drip paintings made in the mid-1940s that probably influenced Jackson Pollock.”

Roberta Smith, the *New York Times*, January 2017

JANET SOBEL

Untitled, c. 1946-48
gouache on paper
12 x 8 3/4 inches (30.5 x 22.2 cm)



JANET SOBEL

Untitled, c. 1943-48
gouache on folded paper
10 x 8 inches (25.4 x 20.3 cm)







Elisabetta Zangrandi

ELISABETTA ZANGRANDI

Tree of Life, 2020
acrylic on wood panel
16 x 17 inches (40.6 x 43.2 cm)
EZ099



ELISABETTA ZANGRANDI

Untitled, 2020
acrylic on canvas
31 1/2 x 31 1/2 inches (80 x 80 cm)
EZ089





“I don’t insert religious symbols, rosaries or crosses. The image is very strong; I leave interpretation to the observer. The Madonna with Child is a symbol of protection: the Pietà or compassion.”

Elisabetta Zangrandi

ELISABETTA ZANGRANDI

Capitello Degli Ottagoni, 2020
acrylic on hand-stitched cotton canvas on wood panel
15 x 9 3/4 inches (38.5 x 24.5 cm)
EZ085



ELISABETTA ZANGRANDI

Capitello di Campagne, 2020
acrylic on hand-stitched cotton canvas on wood panel
10 x 7 inches (25.4 x 17.8 cm)
EZ083



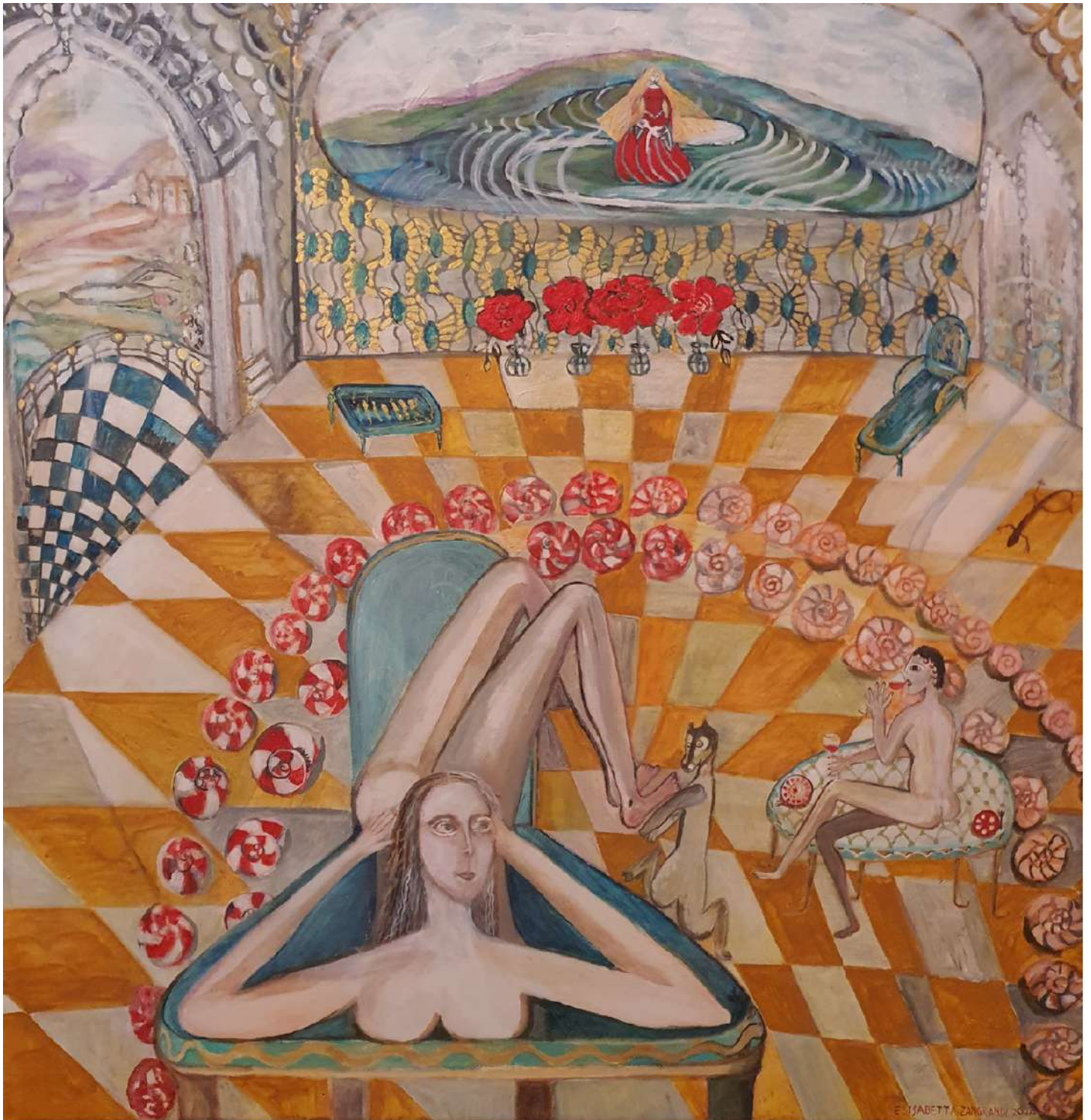
ELISABETTA ZANGRANDI

Capitello con Cupole, 2020
acrylic on canvas
12 x 12 inches (30.5 x 30.5 cm)
EZ084



ELISABETTA ZANGRANDI

Afternoon with Friends, 2020
acrylic on hand-stitched cotton canvas on wood panel
24 x 24 inches (60 x 60 cm)
EZ087



ELISABETTA ZANGRANDI

Sauna de Femminile, 2020
acrylic on canvas
23 1/2 x 31 1/2 inches (60 x 80 cm)
EZ089









Elisabetta Maestro

ELISABETTA MAESTRO

Curiosita, 2020
acrylic on canvas
27 3/4 x 27 3/4 inches (70.5 x 70.5 cm)





“My life is complex and my character is sometimes tormented, so painting is important as it is a moment of detachment from reality.”

Elisabetta Maestro

ELISABETTA MAESTRO

Il Gioco Della Foresta, 2020
acrylic on canvas
27 1/2 x 19 3/4 inches (70 x 50 cm)



ELISABETTA MAESTRO

Betulle, 2020
acrylic on canvas
23 1/2 x 23 1/2 inches (60 x 60 cm)

